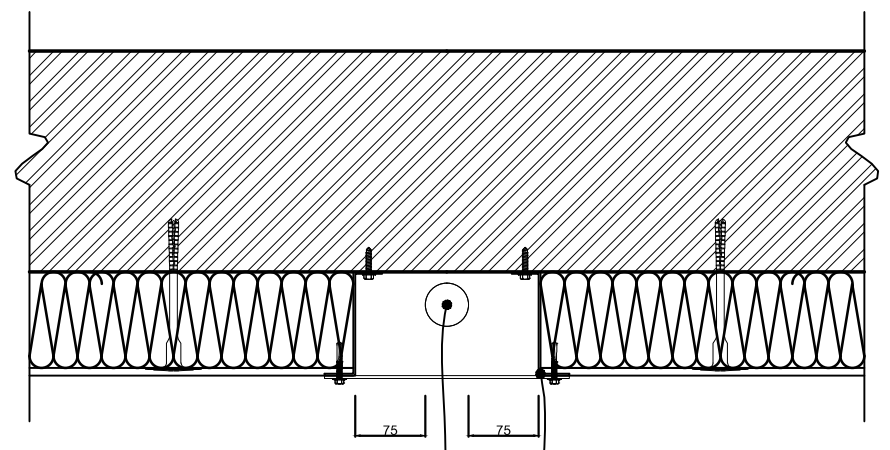


ELEVATION



PLAN

NOTE: IT IS IMPORTANT THAT THE Z SECTIONS ARE TIGHT TO THE WALL AND ANY GAPS ARE FILLED/SEALED TO AVOID GAS FUMES BUILDING UP BEHIND THE SYSTEM

GAS SAFE PIPE COVER DETAIL

Date:	Rev:	Notes	Date:	Rev:	Notes	Date:	10/06/2013	DETAIL REF:	A.13	Rev:	P1	Genesis Centre North Staffs Business Park Innovation Way Stoke-on-Trent ST6 4BF Tel: 01782 366090 Fax: 01782 366091 Mobile: 07824 34 4643
						Drawn by:	JT	TITLE:	GAS SAFE PIPE COVER DETAIL			
						Checked by:	IC					
						Scale :	NTS					