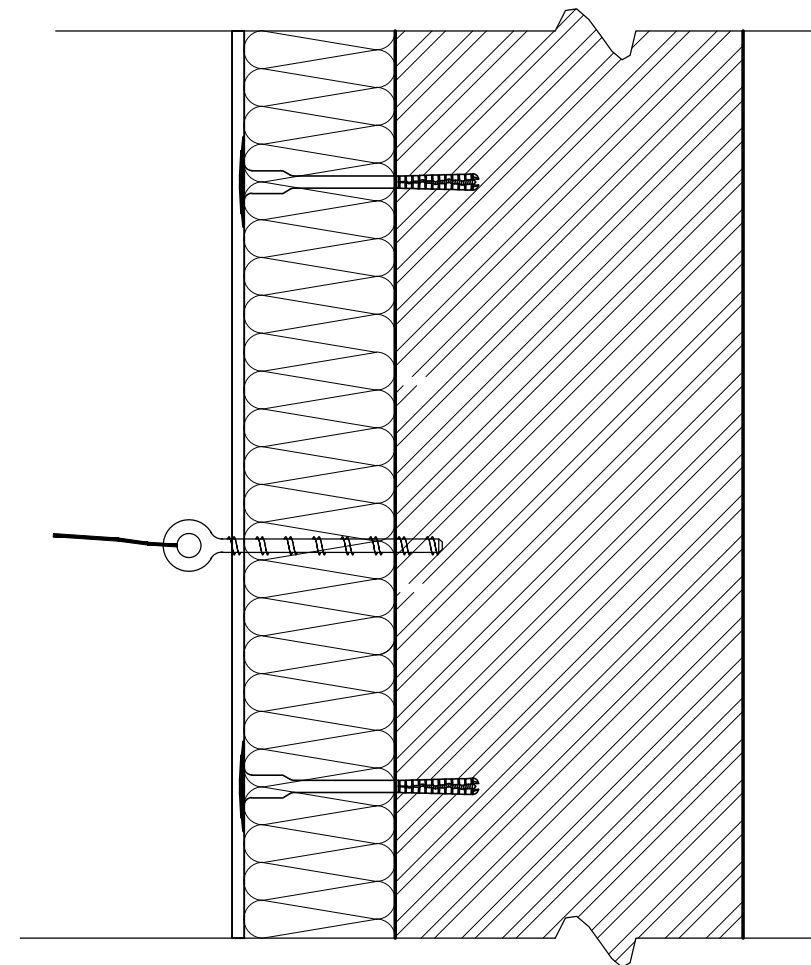


NOTE:
 PRIOR TO ANY EXTERNAL WALL INSULATION SYSTEM
 BEING INSTALLED, THE MAIN CONTRACTOR SHOULD CONTACT
 BT OPENREACH TO ARRANGE FOR THE BT CONNECTIONS
 TO BE EXTENDED, REPLACED OR REPOSITIONED.
 ANY NEW CONNECTION IS THE RESPONSIBILITY OF
 BT OPENREACH.

NO-ONE OTHER THAN BT OPENREACH OR THEIR APPROVED
 CONTRACTORS SHOULD UNDERTAKE THIS WORK.

IT IS A CRIMINAL OFFENCE TO DISTURB BT CONNECTION
 POINTS WITHOUT PRIOR CONSENT.

ONCE CONNECTION HAS BEEN EXTENDED AND APPROVED,
 SYSTEM TO BE INSTALLED AROUND, WITH A SILICONE
 MASTIC AROUND THE CONNECTION BOLT.



BT CONNECTION POINT

Date:	Rev:	Notes	Date:	Rev:	Notes	Date:	10/06/2013	DETAIL REF:	Rev.	Genesis Centre North Staffs Business Park Innovation Way Stoke-on-Trent ST6 4BF Tel: 01782 366090 Fax: 01782 366091 Mobile: 0782 434 4643
							Drawn by: JT	A.22	P1	
							Checked by: IC	TITLE:		
							Scale : NTS	BT CONNECTION DETAIL		